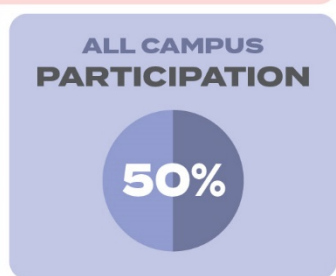


*The steadfast love of the LORD never ceases*

*His mercies never come to an end; they are new every morning; great is His faithfulness.*  
Lamentations 3:22-23

We're making great progress towards our December All In goals—we're halfway there—in every way! Halfway through the month. Halfway towards our financial goal. Half of our households have given and half have committed to 2021. WOW!



If you haven't joined us yet, I think today could be your day! Let's make our gifts back to Jesus our best gifts of the season!

[villaeabible.church/allin](http://villaeabible.church/allin)

*In my last letter to you, I mentioned that I would explain how God gave us just enough financial resources in 2020. We had enough to do the things we felt God was calling us to as the year began—and to do some important things we didn't know He would call us to. Here are some of those things.*

**ALL IN FOR TOMORROW FACILITY UPDATES**

**Aurora & El Camino Campuses:** The experts around us told us it would be impossible. They said the city wouldn't approve our plans to update our parking and facility because it would require too many variances. But sometimes we forget that all things are possible with God! Not only did the city approve the project, but the aldermen and building department have been super supportive and a joy to work with. We have the big approvals and are now finalizing approvals of the details as we expect to break ground on Phase I in May 2021, which will address parking and landscaping.



**Sugar Grove Campus:** We also saw God knock down "impossible" barriers at the Sugar Grove campus and were blessed by great support and help from the village and the county. COVID re-oriented our priorities and Phase I shifted from parking expansion to interior updates while we were meeting outside for worship services. We are days from completion of the upstairs children and student ministry space updates and anticipate completion of the worship center updates around Valentines Day. We are super thankful for the professional and volunteer help from many of you during these projects.



**Plano Campus:** It's interesting to see how God uses unexpected delays and roadblocks to guide us. That's exactly what happened at the Plano campus this year. Phase I will focus on improving our visibility and exterior first impressions and we are hoping to have municipal approval and financial ability to move forward with this in early summer 2021.

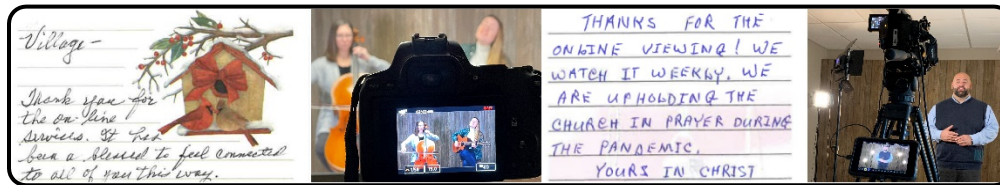


**Indian Creek Campus:** We anticipate Phase I mid-summer which will include updated windows, carpeting, and HVAC.



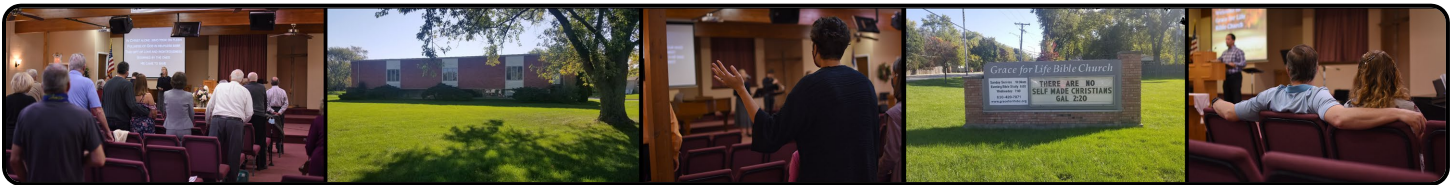
**ONLINE CAMPUS ADDITION**

We certainly had no idea that we would need to launch a brand new online ministry in March. Yet, God provided both the unique abilities from staff, and the financial resources required through your giving. This ministry is now reaching over 3,000 people each week and has developed from simply a weekly broadcast to a full fledged campus—with people not just attending services online, but also connecting in community with each other and giving of their time, talents, treasures, and testimonies.



**NAPERVILLE CAMPUS ADDITION**

Who launches a new campus in the middle of a pandemic? Well, God has shown us that He's not phased and continues to move His Kingdom work forward. We formally adopted Grace for Life Bible church in October. While we won't go public with new signage and a grand opening until later in 2021, we've already seen God's blessing as the church has been strengthened and we're adding people to our numbers through word of mouth.



**BENEVOLENCE**

While many have not experienced income drops during the pandemic, some have been hit hard. It's been such a blessing to see contributions to our benevolence fund increase significantly this year, keeping pace with the increased needs of families within the church body. We were also able to meet some of the needs of our neighbors by hosting Northern Illinois Food Bank mobile food pantries six times in 2020. This was a great opportunity to mobilize our people and show the love of Jesus to the communities around us.

None of this would be possible if it wasn't for YOU—if it wasn't for a church family that faithfully prioritizes their giving back to the Lord's work in our midst. God takes your giving of treasure (money), time (volunteering), talents (skills), and testimony (evangelism), and uses them to fuel the Kingdom work He is doing in our midst. Thank you for making God's Kingdom work a priority in your life!



*Keith M. Duff*  
Keith Duff, Executive Pastor

**THANK YOU!**

Thank you for making God's Kingdom work a priority in your life!